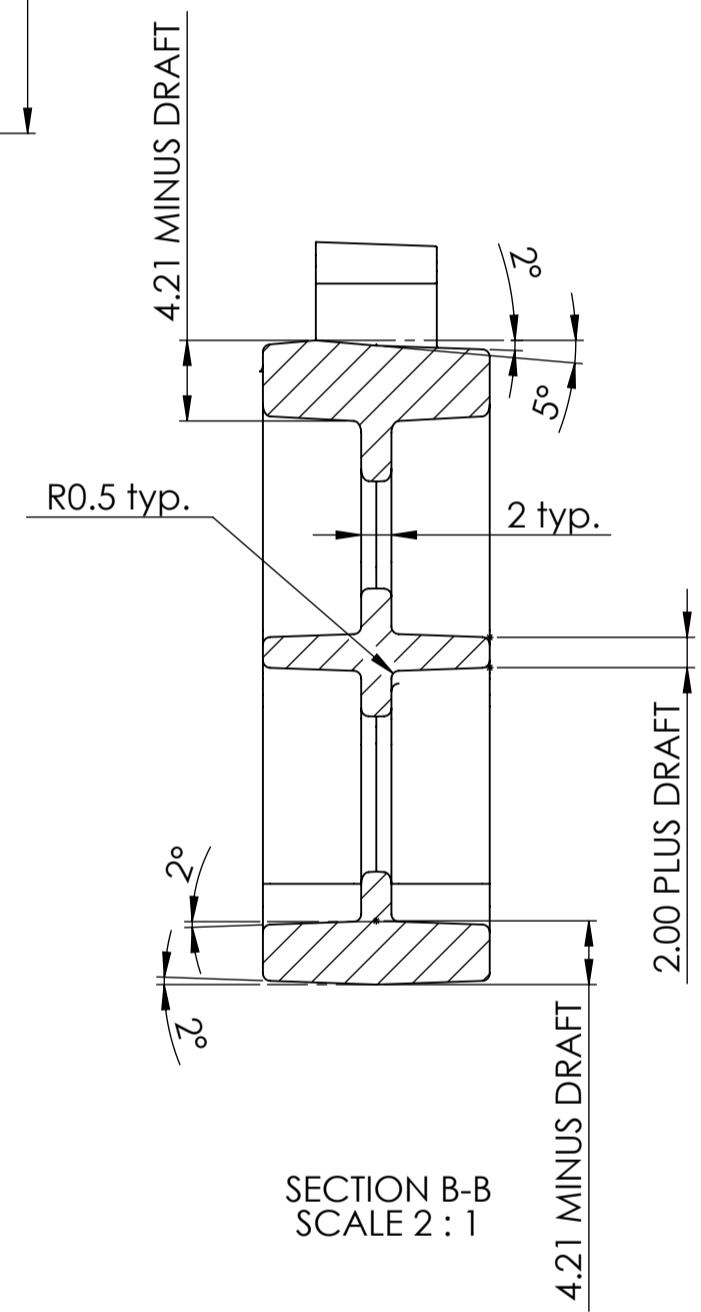
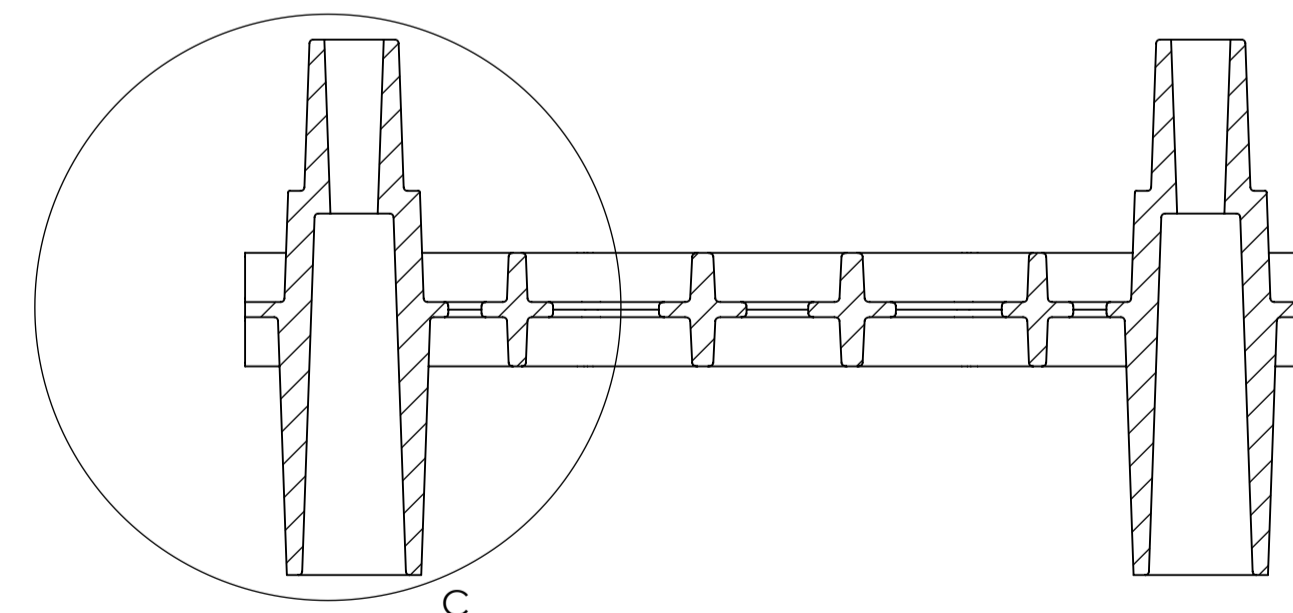
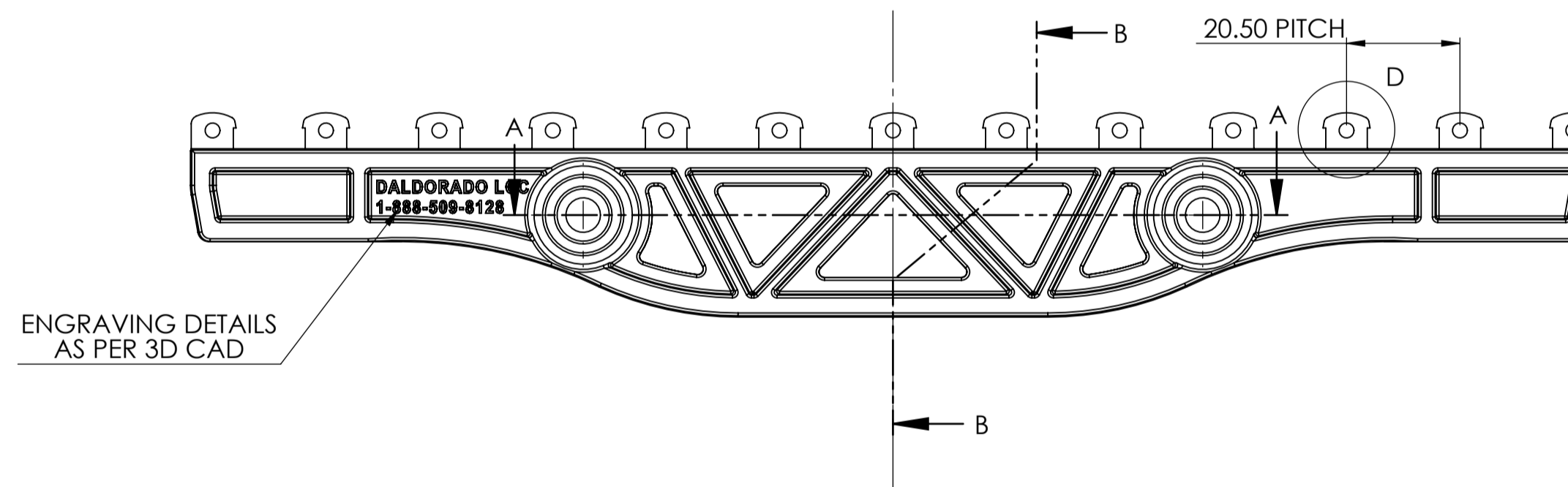
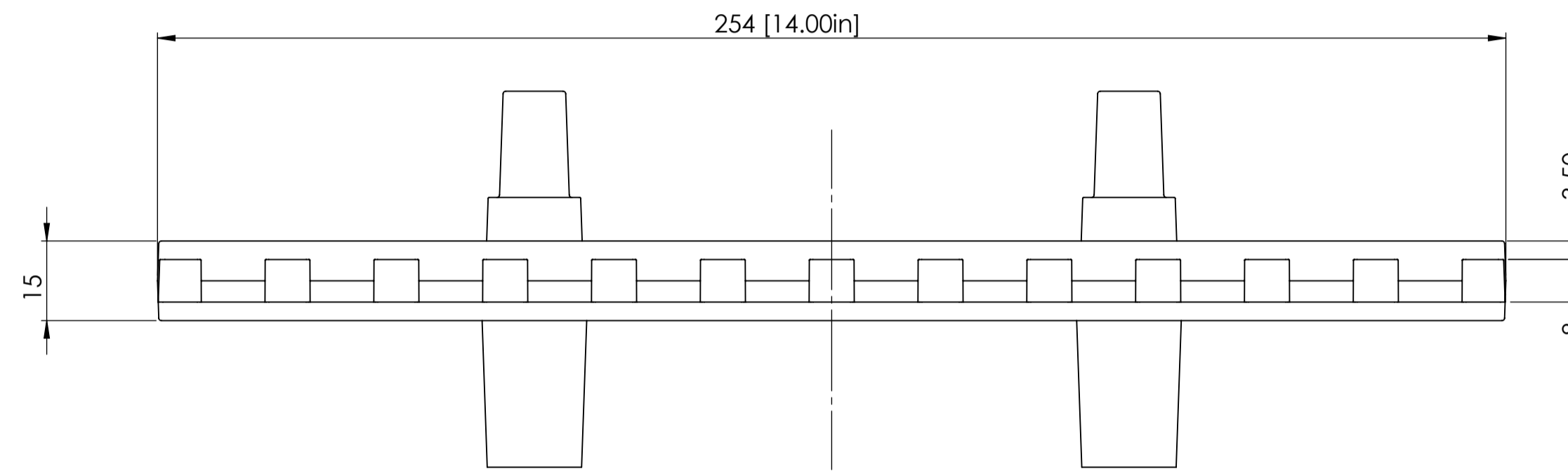
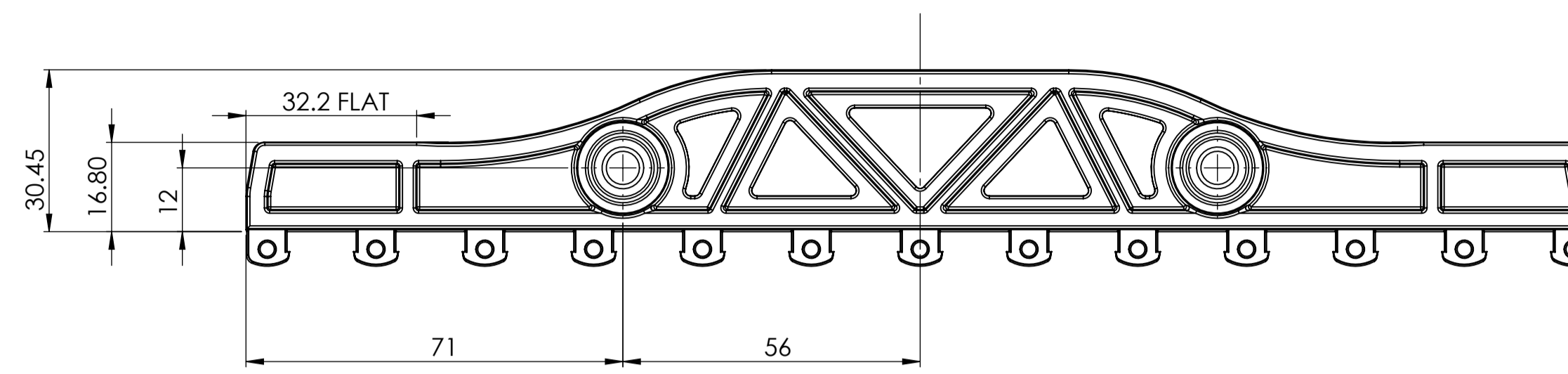


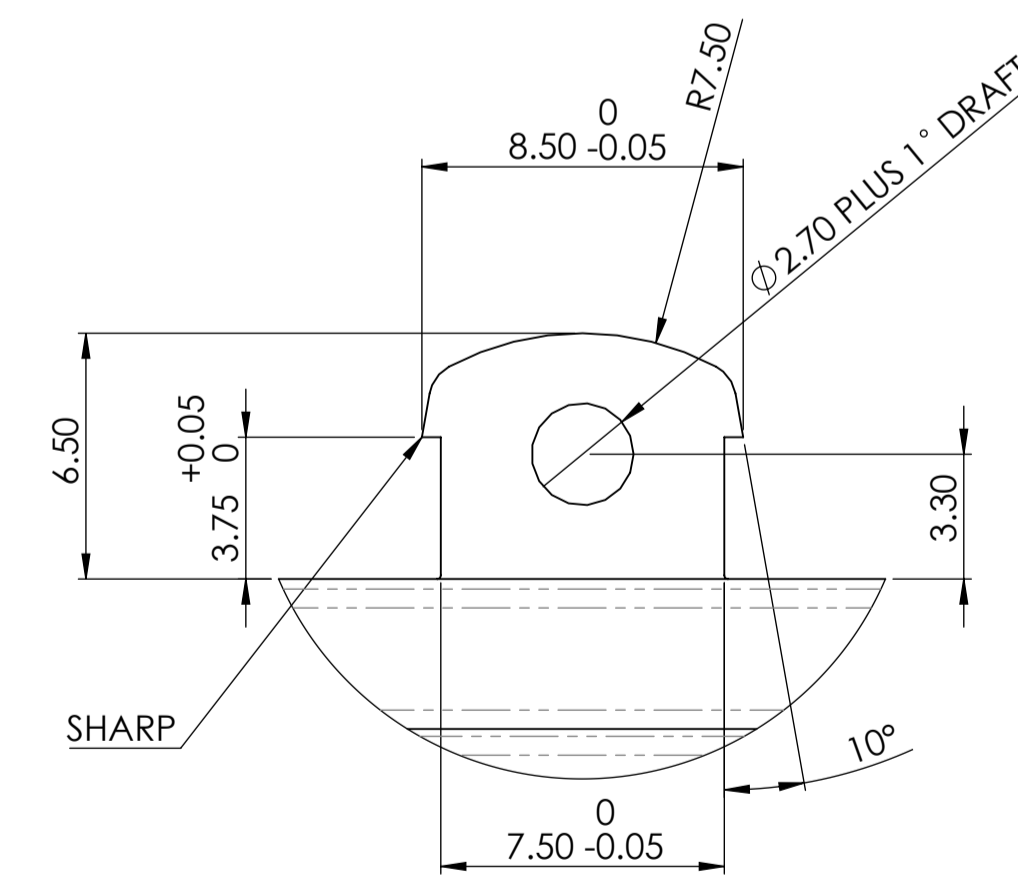
DETAIL C
SCALE 2 : 1



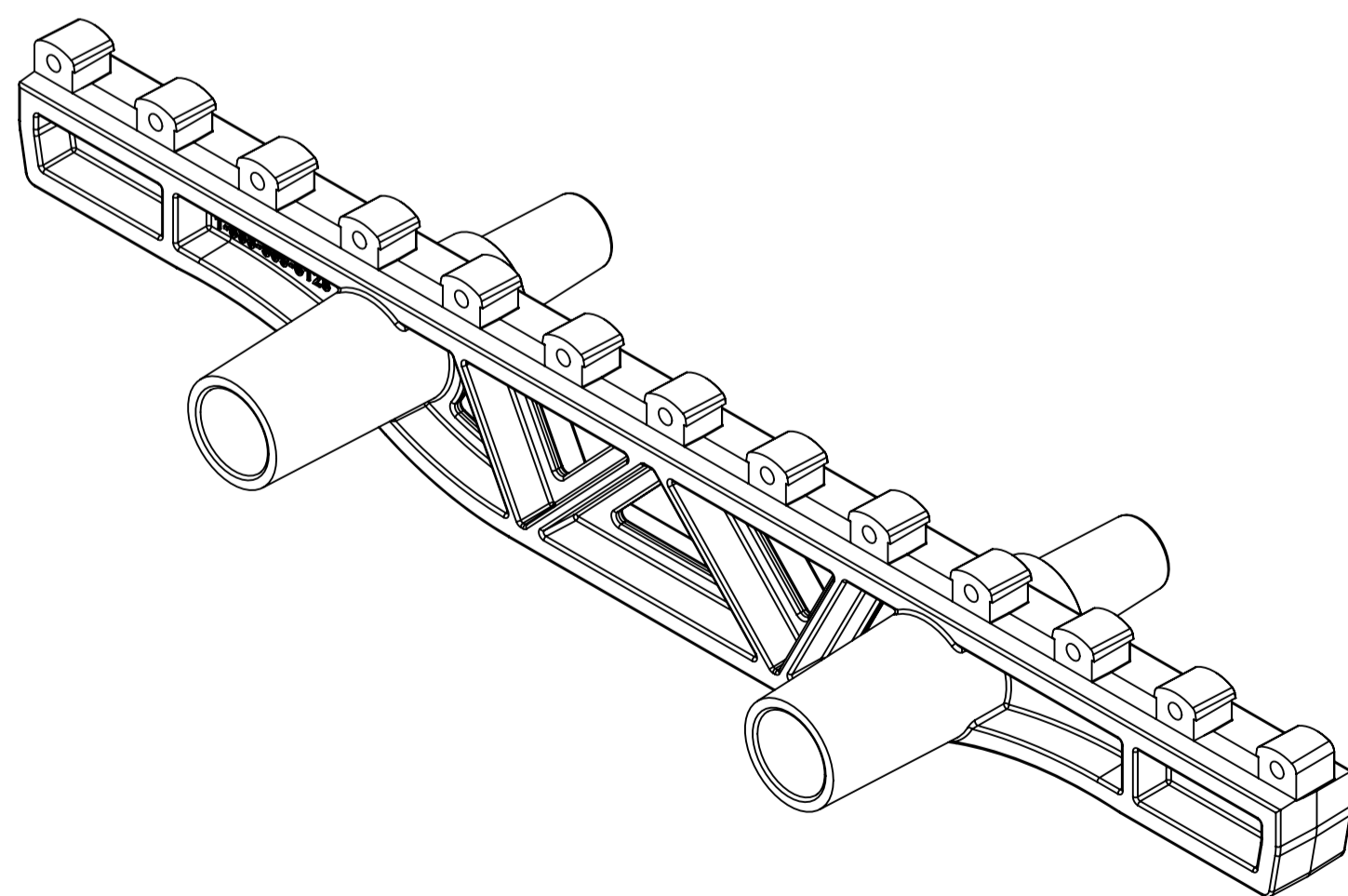
SECTION B-B
SCALE 2 : 1



SECTION A-A



DETAIL D
SCALE 5 : 1



NOTES:

- SEE 3D FILE FOR MORE DETAILS
- PROVIDE MINIMUM DRAFT ANGLES WHERE REQUIRED
- APPROXIMATE WEIGHT BASED ON PVC DENSITY OF 1.4g/cc IS 86.7g

ISSUE	CHANGE	BY	DATE
E			
D			
C			
B			
A			

COPYRIGHT:
THIS DOCUMENT IS THE PROPERTY OF
DALDORADO PTY. LTD. AND IS
PROVIDED ON AN IN-CONFIDENCE BASIS.
IT MAY NOT BE COPIED OR REPRODUCED
WITHOUT THE PRIOR PERMISSION OF
DALDORADO OR ITS AUTHORIZED AGENT.
ALL DIMENSIONS IN mm UNLESS
STATED OTHERWISE

TOLERANCE UNLESS SPECIFIED (Injection Moulding)	
0 to 10mm	±0.30
10 to 20mm	±0.4
20 to 30mm	±0.5
30 to 40mm	±0.6
40 to 50mm	±0.8
50 to 60mm	±1.0
60 to 80mm	±1.2
80 to 100mm	±1.5
ANGULAR	±0.50

THIRD ANGLE
PROJECTION
DO NOT SCALE
IF IN DOUBT ASK

DRAWN: GK
DATE: 15 MAR 2018
CHECKED: R LAWSON
APPROVED: R LAWSON
CLIENT: -

VOLUME: 62131.56 mm³
MATERIAL: PVC
FINISH: XX COLOUR: XX
DESCRIPTION: DPARS 10"
FILE NO: DPARS 10 - 02

ISSUED FOR:
REFERENCE
PRODUCTION
QUOTATION
OK
CLIENT APPROVAL
PROTOTYPE
PRELIMINARY TOOLING

SCALE: 1:1
SHEET 1 OF 1